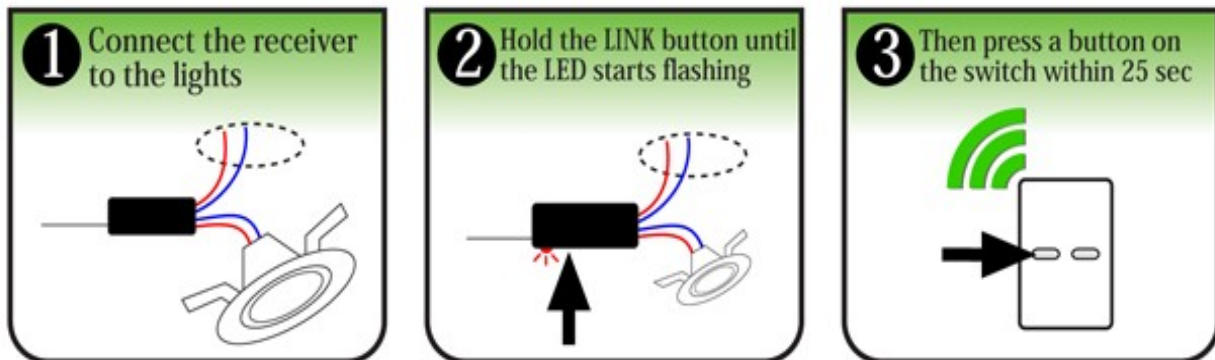


Basic programming:



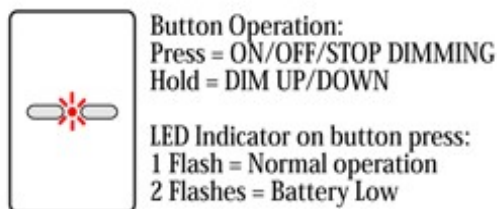
To unlink a button: Repeat steps 2&3.

To clear all links in a Receiver: Hold the Link Button until the LED is ON solid (10 sec) then release.

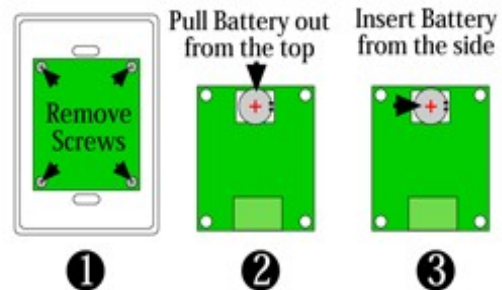
A Receiver can link up to 30 different buttons.

Mount the Switch with double-sided tape or clip off the outer surround to expose standard 2x4 mounting holes.

Transmitter pad:

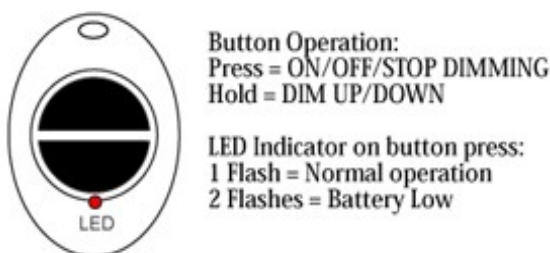


BATTERY REPLACEMENT

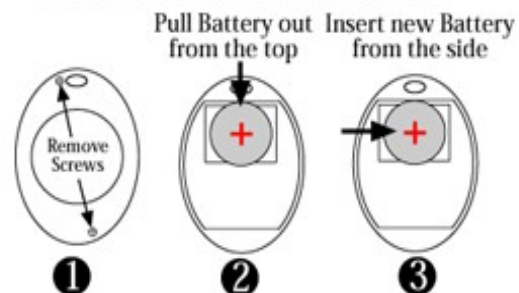


LED will flash 3 times to indicate successful power-up.

Keyring remote:

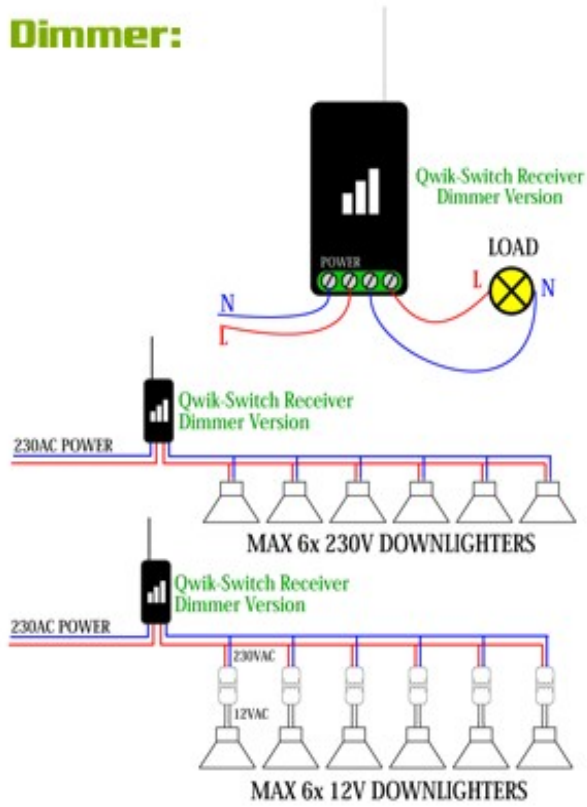


BATTERY REPLACEMENT



After replacing the battery, the LED will flash 3 times to indicate successful power-up.

Dimmer:



Relay:

