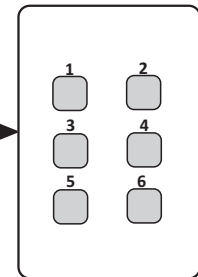
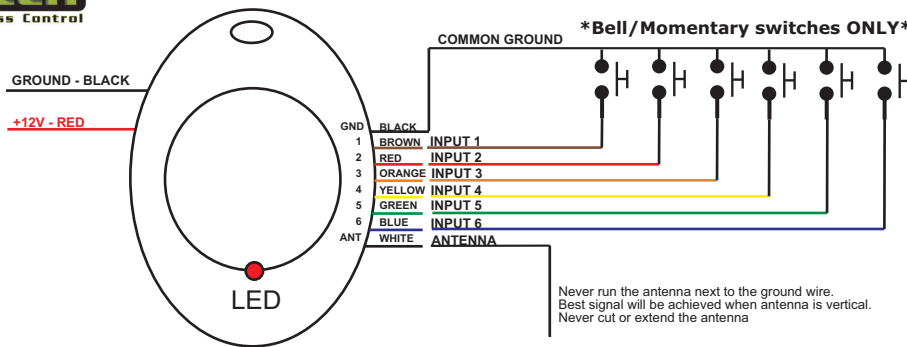


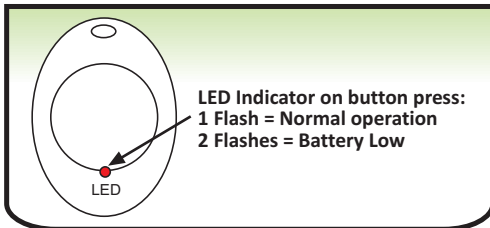
iMod DC (Momentary/bell type switch) Installation

Switch-plate

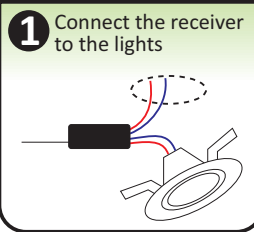


Bell/Momentary switches only
Wire directly to QS iMod module

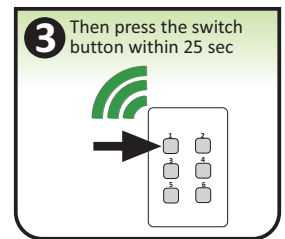
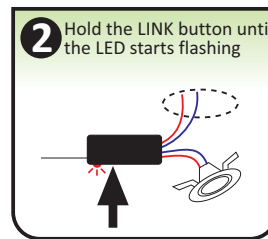
LED INDICATOR



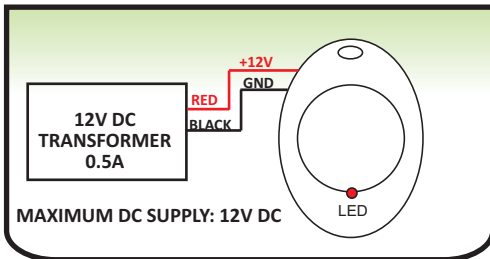
Button Linking:



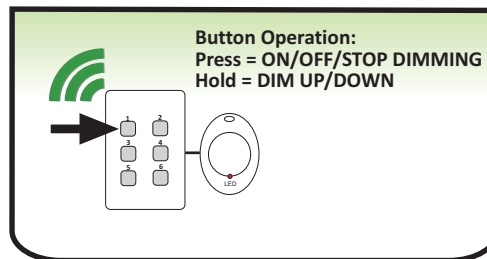
To unlink a button: Repeat steps 2&3.



POWER SUPPLY WIRING



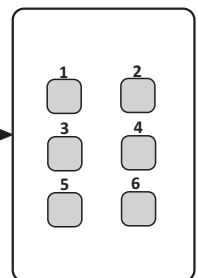
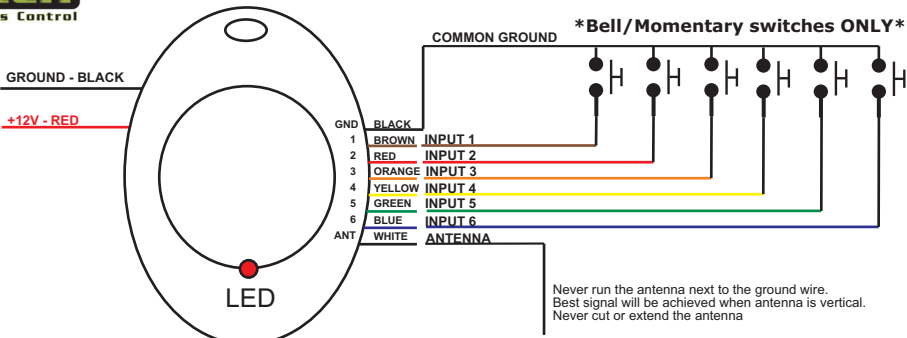
BUTTON OPERATION



www.qwikswitch.co.za

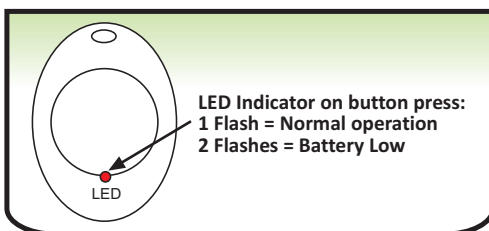
iMod DC (Momentary/bell type switch) Installation

Switch-plate

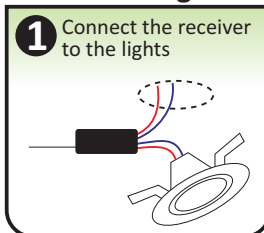


Bell/Momentary switches only
Wire directly to QS iMod module

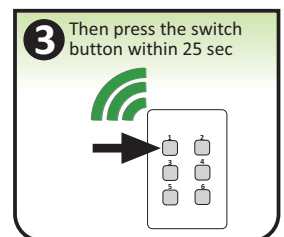
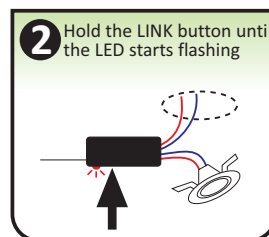
LED INDICATOR



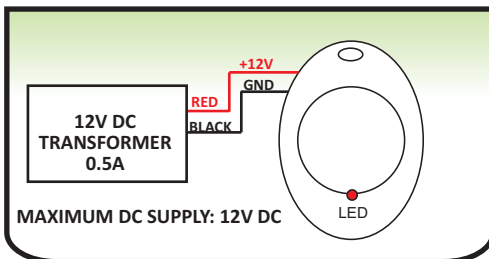
Button Linking:



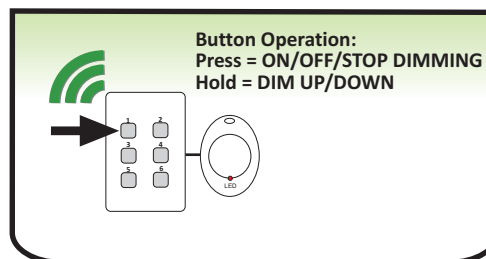
To unlink a button: Repeat steps 2&3.



POWER SUPPLY WIRING



BUTTON OPERATION



www.qwikswitch.co.za