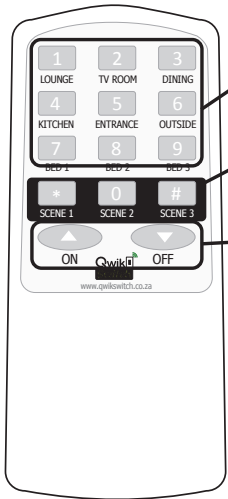




REMOTE CONTROL



Buttons 1-9
Press = ON/OFF
Hold = DIM

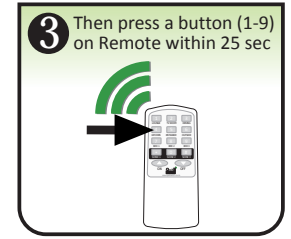
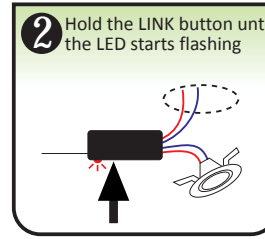
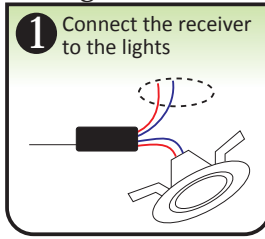
Scene 1/2/3
Press to Activate Scene
Hold for 5 sec to save Scene

Controls the last lights selected
by button 1-9

▲ Press = STEP +20%
Hold = ON

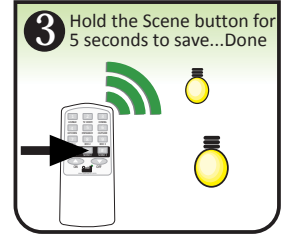
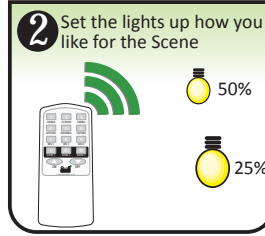
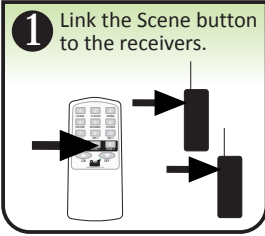
▼ Press = STEP -20%
Hold = OFF

Linking:

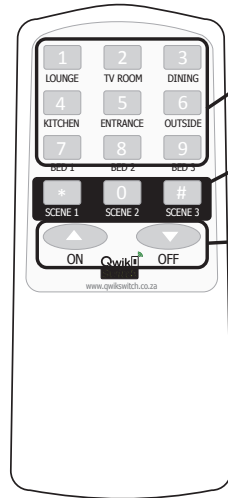


To unlink a button: Repeat steps 2&3.

Scene Setup:



REMOTE CONTROL



Buttons 1-9
Press = ON/OFF
Hold = DIM

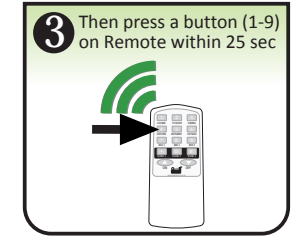
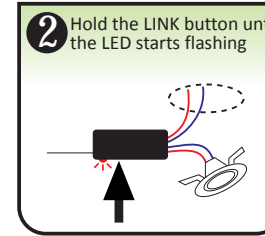
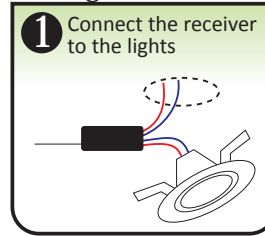
Scene 1/2/3
Press to Activate Scene
Hold for 5 sec to save Scene

Controls the last lights selected
by button 1-9

▲ Press = STEP +20%
Hold = ON

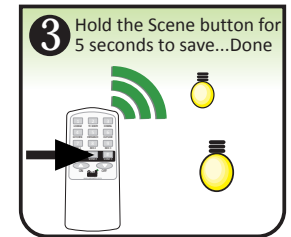
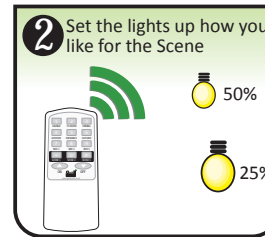
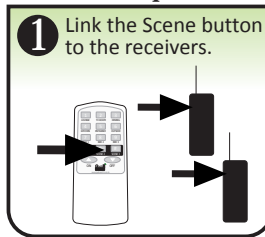
▼ Press = STEP -20%
Hold = OFF

Linking:

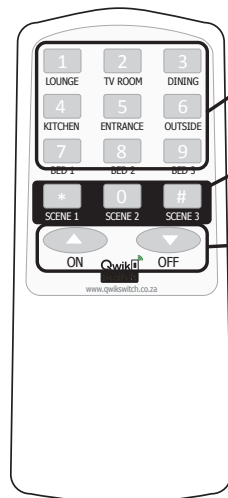


To unlink a button: Repeat steps 2&3.

Scene Setup:



REMOTE CONTROL



Buttons 1-9
Press = ON/OFF
Hold = DIM

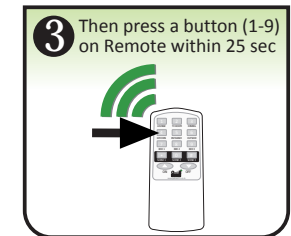
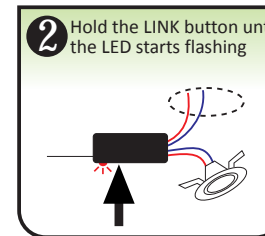
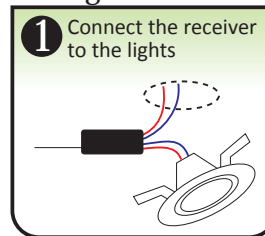
Scene 1/2/3
Press to Activate Scene
Hold for 5 sec to save Scene

Controls the last lights selected
by button 1-9

▲ Press = STEP +20%
Hold = ON

▼ Press = STEP -20%
Hold = OFF

Linking:



To unlink a button: Repeat steps 2&3.

Scene Setup:

